

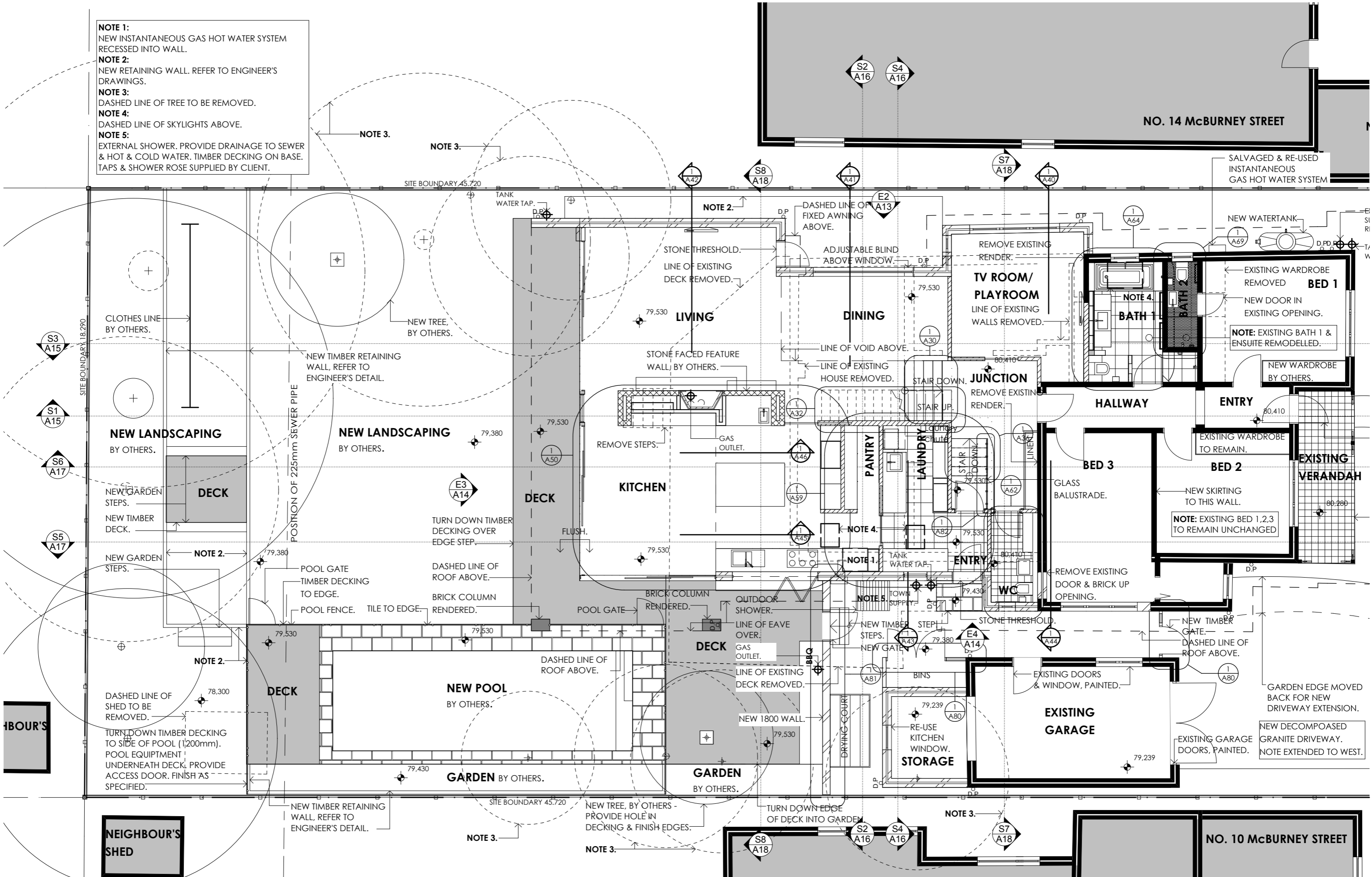
NOTE 1:
NEW INSTANTANEOUS GAS HOT WATER SYSTEM RECESSED INTO WALL.

NOTE 2:
NEW RETAINING WALL. REFER TO ENGINEER'S DRAWINGS.

NOTE 3:
DASHED LINE OF TREE TO BE REMOVED.

NOTE 4:
DASHED LINE OF SKYLIGHTS ABOVE.

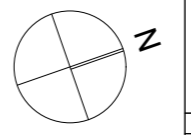
NOTE 5:
EXTERNAL SHOWER. PROVIDE DRAINAGE TO SEWER & HOT & COLD WATER. TIMBER DECKING ON BASE. TAPS & SHOWER ROSE SUPPLIED BY CLIENT.



CONTEMPORARY ARCHITECTURE PTY LTD
CLARE CARTER - ARCHITECT-REG. NO. 7045
G2, 109 ALEXANDER STREET, CROWS NEST
P: 02 9438 4200 F: 02 9438 4210

SCHUTTE HOUSE
12 McBURNEY STREET
NAREMBURN NSW 2065

TENDER DRAWINGS
28th MAY 2010



GROUND FLOOR PART 1
SCALE: 1:100 @ A3 DATE PRINTED : 28/05/2010
DATE DRAWN : 17.07.09 DRAWN BY : CGC

A07

A